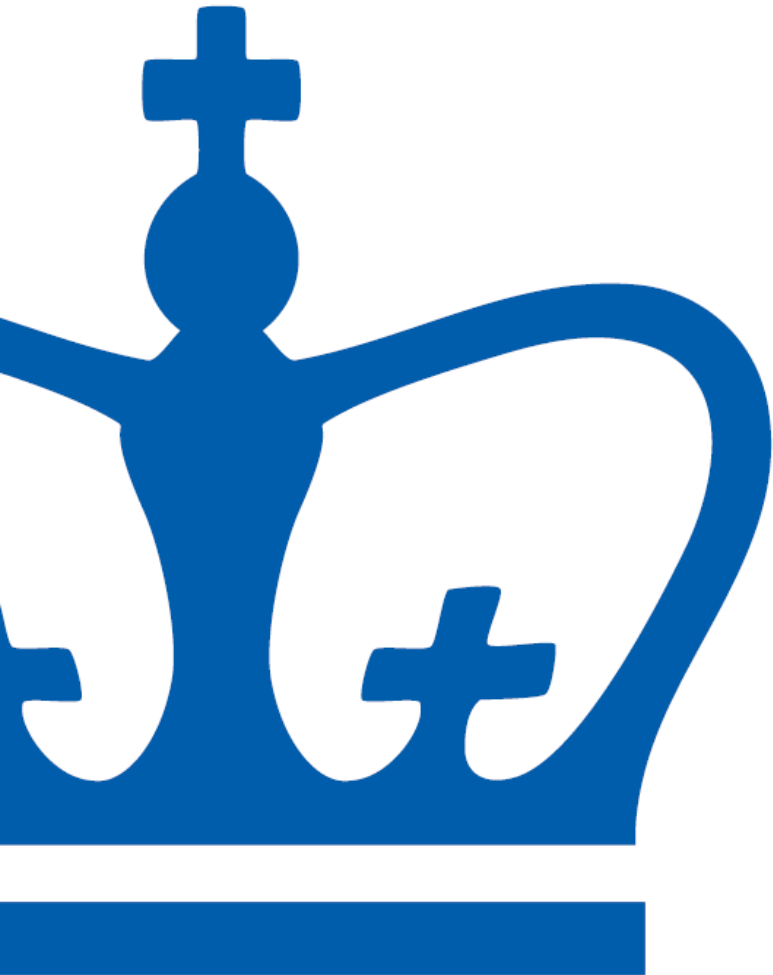


Reimagining Lerner Hall



Student Affairs Committee

February 23, 2018



Building Community

- Columbia should prioritize the creation of an holistic community, spirit and identity
- As a hub of student life, Lerner Hall is the most appropriate physical space in which to build community



Our Vision

Short-term

- Dedicated spaces for LGBTQ+ and students of color
- Student Food Bank:
5th floor of Lerner,
East Hallway

Medium-term

- Central Student Lounge

Long-term

- Creation of a unified health center, freeing space for student use on multiple levels of Lerner
- Relocation of administrative offices, including Chaplain's Office, UEM, Financial Aid

Central Student Lounge (Medium-Term)

- Central area for community building and student interaction
- Spans 200, 300, and 400 levels
- Features lounge space, performance space, and fun amenities
- Removal of mailboxes and physical alterations required

Current 200, 300 and 400 Level Space Arrangements

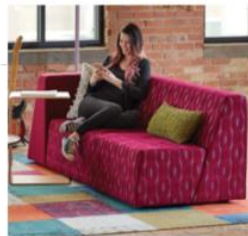
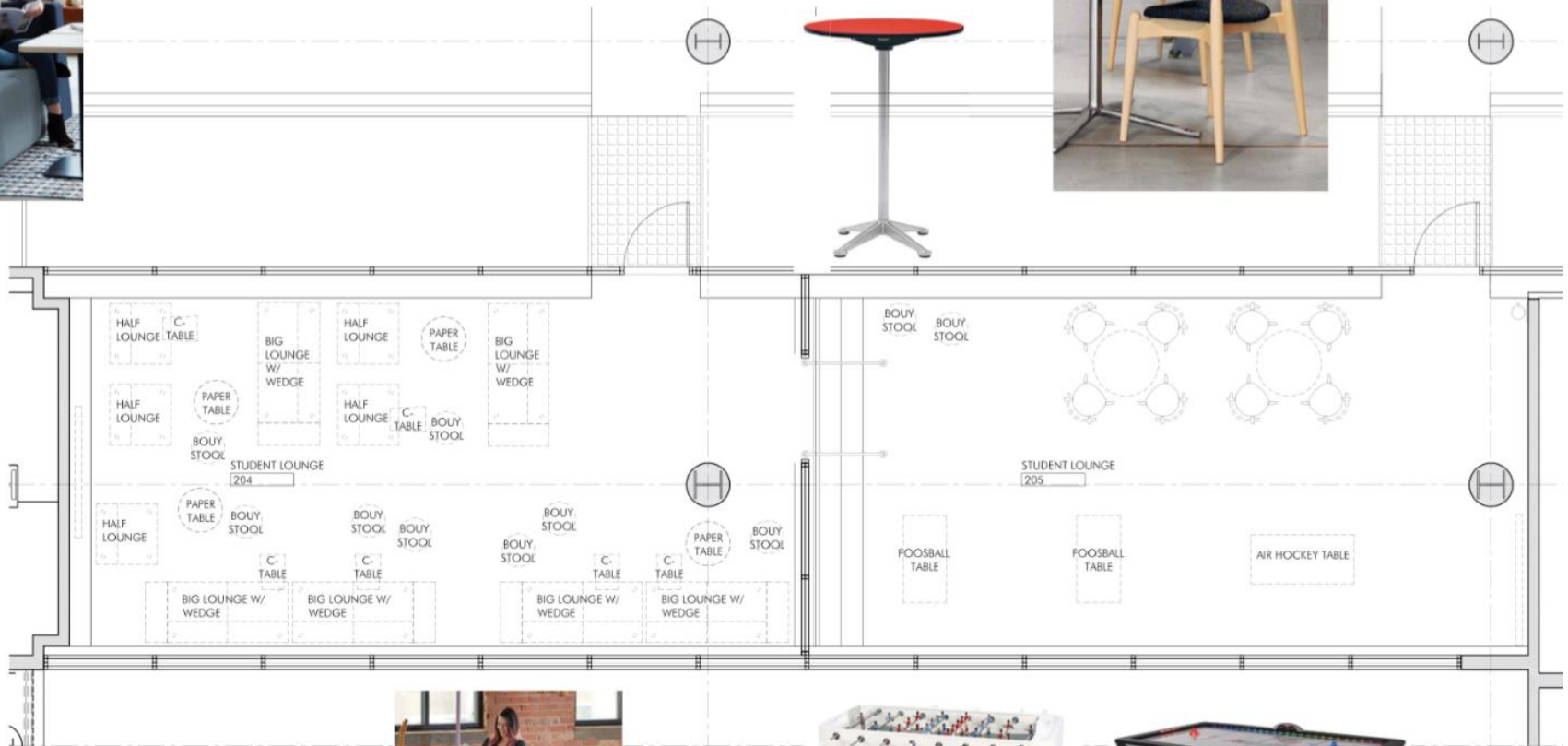
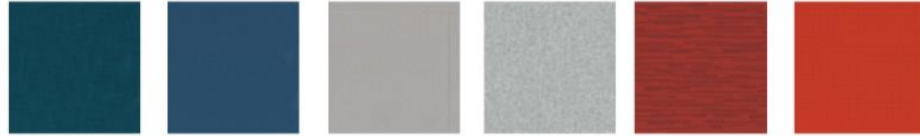


200 Level Ramp Lounges

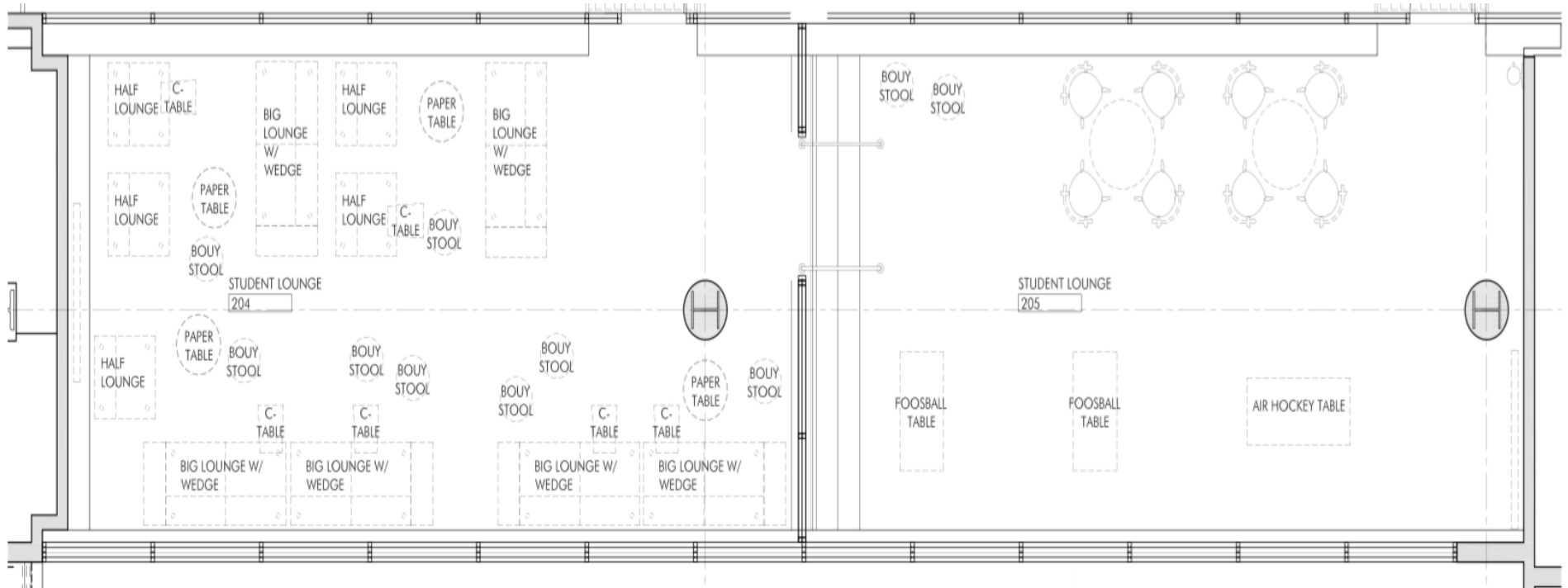


300 and 400 Level Mailboxes

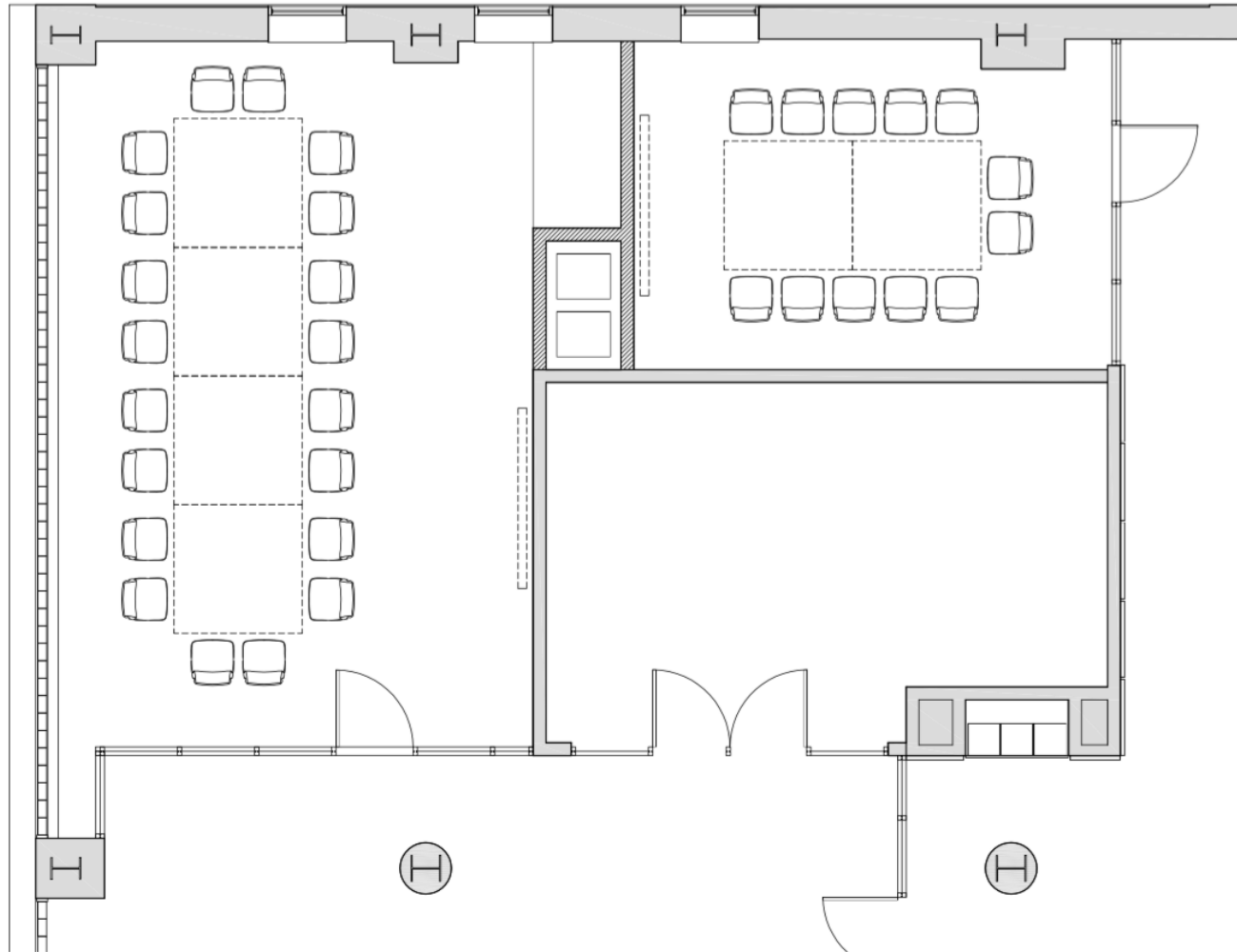
Lerner Hall 200 Level



Lerner Hall 200 Level



Rooms 301A & 301C: Two New Conference Rooms



Room 478 – New Computer Lab

